



Daily Technical Trader - Qatar

May 14, 2026



QE Index Summary

	13 May 2026	12 May 2026	Chg
Index	10,473	10,524	-0.48%
Value QR (mn)	405	416	-2.64%
Trades	25,544	22,581	13.12%
Volume (mn)	150	145	3.45%
Stocks Traded	51	53	-3.77%
Gainers	11	9	22.22%
Losers	38	38	0.00%
Unchanged	2	6	-66.67%

Source: Qatar Stock Exchange

Weekly Market Recommendations:

Time Frame	Trend	Current Level	Target	Support	Resistance
Short-term (10May -16May)	➔	10,472.69	10,300	10,250	10,785
Medium-term (03May- 31May)	➔	10,472.69	10,100	10,000	11,000

Weekly Company Recommendations:

Company Name	Current Price	View	Time Frame	Support	Resistance
QAMC	QR1.707	Positive	Short-term (10May -16May)	QR1.658	QR1.770
QGRI	QR1.800	Positive	Medium-term (03May- 31May)	QR1.672	QR1.965

Daily Company Recommendations:

Company Name	Current Price	View	Time Frame	Support	Resistance
AKHI	QR2.846	Positive	1 Day	QR2.816	QR2.881
MCCS	QR5.376	Positive	1 Day	QR5.337	QR5.442
QAMC	QR1.730	Positive	1 Day	QR1.714	QR1.752
QGTS	QR4.344	Positive	1 Day	QR4.308	QR4.389

List of Stocks Close to Technical Levels

Companies Closest to Resistance

Company	Ticker	Mcap (QRmn)	Price	Resistance
Masraf Al Rayan	MARK	20,097.3	2.161	2.174
Gulf International Services	GISS	4,027.2	2.167	2.181
Ezdan Holding Group	ERES	23,288.9	0.878	0.892
Qatar Gas Transport Company Ltd.	QGTS	24,066.9	4.344	4.361
Mesaieed Petrochemical Holding	MPHC	14,673.8	1.168	1.185

Companies Closest to Support

Company	Ticker	Mcap (QRmn)	Price	Support
Qatar Navigation	QNNS	11,702.5	10.300	10.296
Doha Bank	DHBK	8,079.8	2.606	2.599
Baladna	BLDN	2,812.9	1.312	1.305
The Commercial Bank	CBQK	17,079.4	4.220	4.210
Barwa Real Estate Company	BRES	9,144.4	2.350	2.346

Companies with RSI over 70 (Overbought)

Company	Ticker	Mcap (QRmn)	Price	RSI
Dlala Brokerage & Investments Holding Co	DBIS	228.3	1.199	71.96
Qatar Aluminum Manufacturing Co	QAMC	9,653.6	1.730	71.70
Estithmar Holding	IGRD	18,063.2	4.020	71.48
Al Khaleej Takaful Group	AKHI	726.5	2.846	71.22
Vodafone Qatar	VFQS	11,286.1	2.670	70.93

Companies with RSI below 30 (Oversold)

Company	Ticker	Mcap (QRmn)	Price	RSI
Doha Bank	DHBQ	8,079.8	2.606	27.87
Mekdam Holding group	MKDM	394.2	2.319	34.32
United Development Co	UDCD	2,984.9	0.843	38.64
Aamal Co	AHCS	4,851.0	0.770	39.90
Qatar Fuel	QFLS	14,019.0	14.10	40.73

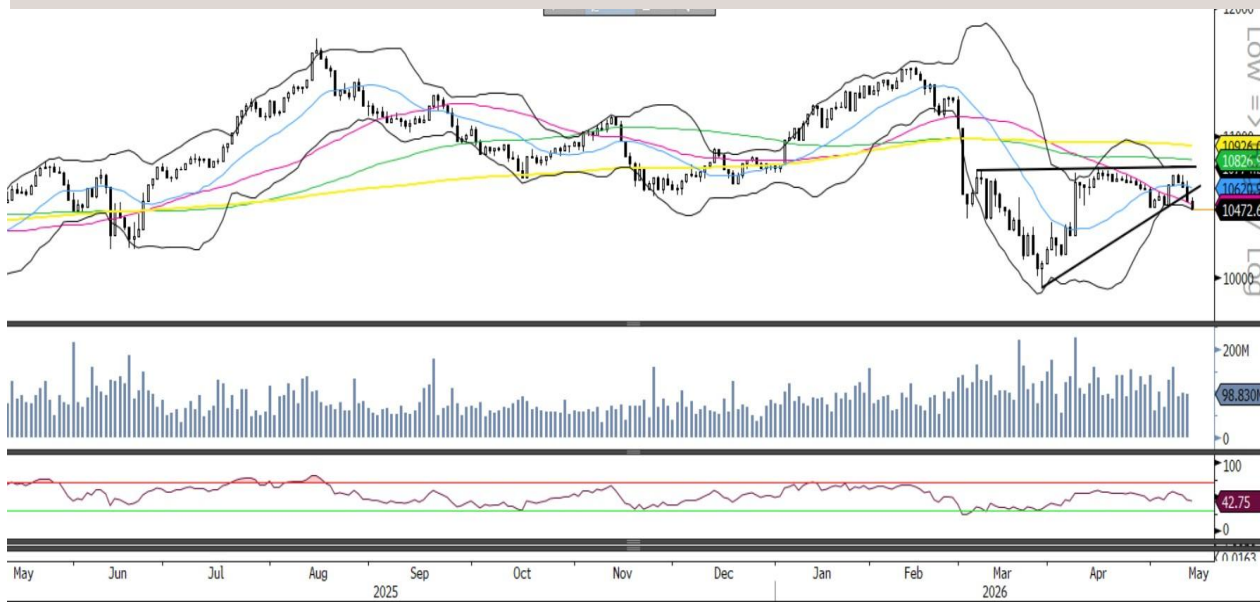
Source: Refinitiv, QNBFS Research

Outlook

The QE Index lost around 51 points to close below the 10,500 mark on Wednesday. The RSI line has slipped below the 50 zone. Key support for the Index is now seen near 10,250, while resistance is expected around 10,785.

QE Index- Technical Charts

Daily



Source: Bloomberg, QNBFS Research

Weekly



Source: Bloomberg, QNBFS Research

Monthly



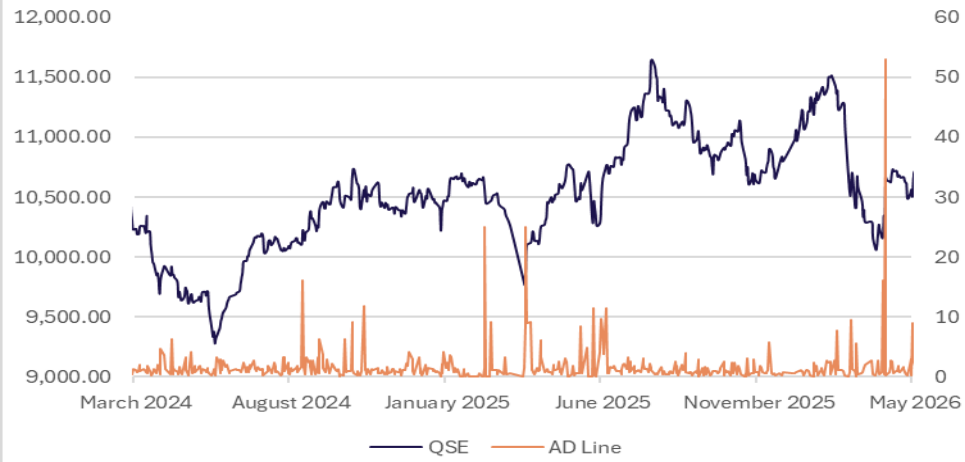
Source: Bloomberg, QNBFS Research

The QE Index continued its decline for the fourth consecutive session and slid lower on the back of profit-booking. Meanwhile, the Index breached its important support of its 50-DMA currently near 10,510, showing signs of weakness. The Index has its immediate support near 10,450, any sustained weakness below it can drag the Index further lower to test 10,350. On the flip side, the Index needs to reclaim its 50-DMA to hold any chance of bounce back.

The QE Index bounced back after witnessing two consecutive weeks of decline. Moreover, the Index developed a bullish marubozu candle and stayed above its 100-WMA currently near 10,600, showing positive signs. However, the Index failed to close above its 200-WMA currently near 10,750. Acceptance above it is required for a further push towards its 50-WMA near 10,900. However, any failure to move above 10,750, can test the 10,600 level.

The QE Index managed to stay above its lower end of the channel trendline and closed above it, developing an inside day bullish candle, showing signs of a pause on downside. The Index also managed to protect its 200-MWA currently near 10,050, indicating positive signs. However, the Index needs to sustain above its 100-MWA currently near 10,550 to move higher towards its 50-MWA currently near 10,900. On the downside, any sustained weakness below its 200-MWA can drag it down to test 9,950.

Advance/Decline Line



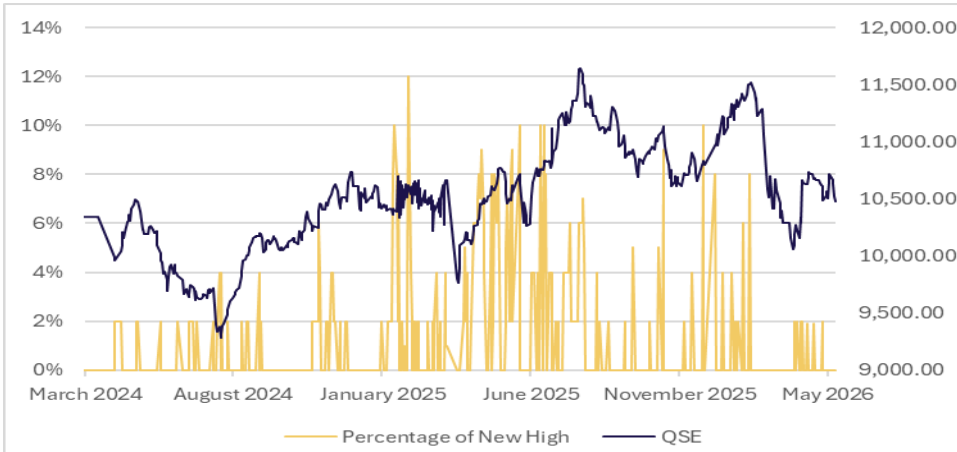
Source: Refinitiv, QNBFS Research

Percentage of Stocks Above 50-day Moving Average



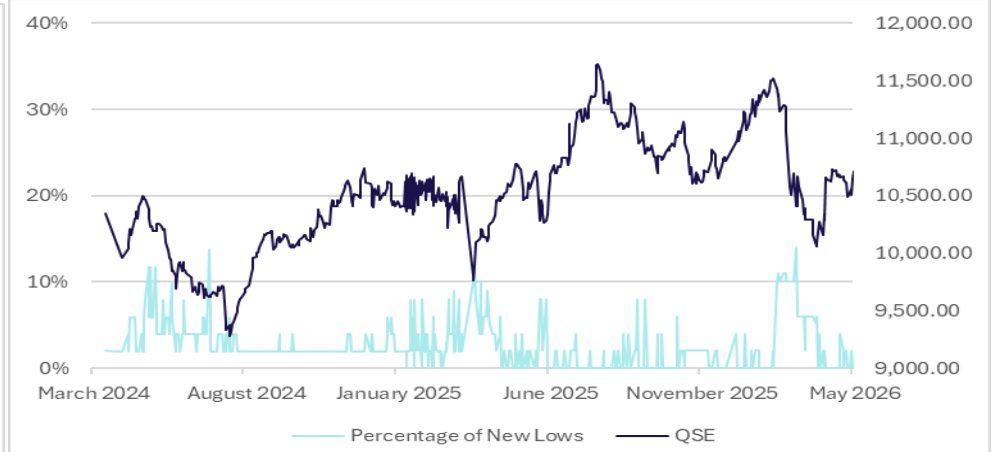
Source: Refinitiv, QNBFS Research

Percentage of New Highs to Total Market



Source: Refinitiv, QNBFS Research

Percentage of New Lows to Total Market



Source: Refinitiv, QNBFS Research

Daily Company Recommendations

AKHI (Alkhaleej Takaful)



AKHI after achieving its target trimmed its gains, however, it managed to close above its upper end of the bollinger band, showing signs of the rally to continue. The RSI line is showing strength. Traders can hold their existing positions and add fresh positions only above QR2.859, for a revised target of QR2.881, with a new stop loss at QR2.816.

Source: Bloomberg, QNBFS Research

MCCS (Mannai Corp.)



MCCS has been consolidating in the channel and currently on the verge of a breakout, indicating a possible upside momentum. The RSI line is in the bullish zone. Traders can initiate buy above the upper end of the channel at QR5.400 for a target of QR5.442, with a stop loss at QR5.337.

Source: Bloomberg, QNBFS Research

Weekly Company Recommendations



On the weekly charts, the stock has been moving on the upside since the past few weeks and is staying above its mid-bollinger band and approaching towards its gap filling area which it had left earlier, indicating the stock is showing strength. Moreover, its trading above all the moving averages, indicating a likely higher move. The RSI line supports this bullish observation. Traders can consider buying the stock above QR1.718, with a stop loss of QR1.658 for a potential target of QR1.770.

Source: Bloomberg, QNBFS Research



On the monthly charts, QGRI has been stuck in the channel over the past few months, however, it managed to close above its 50-MWA along with its upper end of the bollinger band, showing signs of a possible breakout. Moreover, the stock witnessed increased volumes, which is a positive sign. The RSI line is also showing strength above the 50 zone. Investors could consider buying the stock above QR1.855 for a breakout confirmation, with a stop loss of QR1.672 for a potential target of QR1.965.

Source: Bloomberg, QNBFS Research

QAMC (Qamco) - Short Term



QAMC has been moving higher since breaching the channel over the past few days and is moving along the upper end of the channel, indicating strength. The RSI line is the buy zone. Traders can initiate buy positions above QR1.737, for a target of QR1.752, with a stop loss at QR1.714.

Source: Bloomberg, QNBFS Research

QGTS (Nakilat)- Medium Term



QGTS rebounded after witnessing correction near the lower end of the bollinger band and closed above its 50-DMA with a reversal candle, showing signs of the bounce back to continue. The RSI line is moving up towards the 50 zone. Traders can initiate buy above QR4.352, for a target of QR4.389, with a stop loss at QR4.308.

Source: Bloomberg, QNBFS Research

Contacts

QNB Financial Services Co. W.L.L.

Contact Center: (+974)4476 6666

info@qnbfs.com.qa

Doha, Qatar

Shahan Keushgerian

Senior Research Analyst

shahan.keushgerian@qnbfs.com.qa

Saugata Sarkar, CFA, CAIA

Head of Research

saugata.sarkar@qnbfs.com.qa

Phibion Makuwerere, CFA

Senior Research Analyst

phibion.makuwerere@qnbfs.com.qa

Dana Saif Al Sowaidi

Research Analyst

dana.alsowaidi@qnbfs.com.qa

Disclaimer and Copyright Notice: This publication has been prepared by QNB Financial Services Co. W.L.L. ("QNBFS") a wholly-owned subsidiary of Qatar National Bank (Q.P.S.C.). QNBFS is regulated by the Qatar Financial Markets Authority and the Qatar Exchange. Qatar National Bank (Q.P.S.C.) is regulated by the Qatar Central Bank. This publication expresses the views and opinions of QNBFS at a given time only. It is not an offer, promotion or recommendation to buy or sell securities or other investments, nor is it intended to constitute legal, tax, accounting, or financial advice. QNBFS accepts no liability whatsoever for any direct or indirect losses arising from use of this report. Any investment decision should depend on the individual circumstances of the investor and be based on specifically engaged investment advice. We therefore strongly advise potential investors to seek independent professional advice before making any investment decision. Although the information in this report has been obtained from sources that QNBFS believes to be reliable, we have not independently verified such information and it may not be accurate or complete. QNBFS does not make any representations or warranties as to the accuracy and completeness of the information it may contain, and declines any liability in that respect. For reports dealing with Technical Analysis, expressed opinions and/or recommendations may be different or contrary to the opinions/recommendations of QNBFS Fundamental Research as a result of depending solely on the historical technical data (price and volume). QNBFS reserves the right to amend the views and opinions expressed in this publication at any time. It may also express viewpoints or make investment decisions that differ significantly from, or even contradict, the views and opinions included in this report. This report may not be reproduced in whole or in part without permission from QNBFS.