



Daily Technical Trader - Qatar

May 11, 2026



QE Index Summary

	10 May 2026	7 May 2026	Chg
Index	10,664	10,714	-0.47%
Value QR (mn)	301	570	-47.25%
Trades	18,789	34,650	-45.77%
Volume (mn)	141	261	-46.10%
Stocks Traded	53	53	0.00%
Gainers	21	36	-41.67%
Losers	24	14	71.43%
Unchanged	8	3	166.67%

Source: Qatar Stock Exchange

Weekly Market Recommendations:

Time Frame	Trend	Current Level	Target	Support	Resistance
Short-term (10May -16May)	➔	10,663.50	10,850	10,550	10,900
Medium-term (03May- 31May)	➔	10,663.50	10,900	10,300	11,300

Weekly Company Recommendations:

Company Name	Current Price	View	Time Frame	Support	Resistance
QAMC	QR1.707	Positive	Short-term (10May -16May)	QR1.658	QR1.770
QGRI	QR1.800	Positive	Medium-term (03May- 31May)	QR1.672	QR1.965

Daily Company Recommendations:

Company Name	Current Price	View	Time Frame	Support	Resistance
QAMC	QR1.712	Positive	1 Day	QR1.698	QR1.732
QOIS	QR0.809	Positive	1 Day	QR0.802	QR0.818
GISS	QR2.169	Positive	1 Day	QR2.154	QR2.190
DOHI	QR2.916	Positive	1 Day	QR2.897	QR2.951

List of Stocks Close to Technical Levels

Companies Closest to Resistance				
Company	Ticker	Mcap (QRmn)	Price	Resistance
Gulf International Services	GISS	4,030.9	2.169	2.174
Qatar Aluminium Manufacturing Company	QAMC	9,553.2	1.712	1.720
Mesaieed Petrochemical Holding	MPHC	14,987.9	1.193	1.198
Masraf Al Rayan	MARK	20,357.7	2.189	2.192
Baladna	BLDN	2,894.4	1.350	1.355

Companies Closest to Support				
Company	Ticker	Mcap (QRmn)	Price	Support
Qatar Insurance Company	QATI	7,332.4	2.245	2.240
Ezdan Holding Group	ERES	23,686.8	0.893	0.883
Qatar Gas Transport Company Ltd.	QGTS	24,449.2	4.413	4.402
Masraf Al Rayan	MARK	20,357.7	2.189	2.176
Doha Bank	DHBK	8,371.3	2.700	2.684

Companies with RSI over 70 (Overbought)				
Company	Ticker	Mcap (QRmn)	Price	RSI
Estithmar Holding QPSC	IGRD	19,056.2	4.241	80.45
Vodafone Qatar QSC	VFQS	11,163.5	2.641	76.88
Qatar Aluminium Manufacturing Co	QAMC	9,553.2	1.712	76.45
Dlala Brokerage & Investments Holding Co QSC	DBIS	224.3	1.178	72.10
Industries Qatar QSC	IQCD	75,080.5	12.410	71.43

Companies with RSI below 30 (Oversold)				
Company	Ticker	Mcap (QRmn)	Price	RSI
Mekdam Holding group	MKDM	393.7	2.316	24.01
Doha Bank QPSC	DHBK	8,371.3	2.700	32.74
Al Meera Consumer Goods Co QSC	MERS	2,795.4	13.570	38.58
Ahli Bank QSC	ABQK	9,704.6	3.804	38.79
United Development Co QSC	UDCD	3,041.6	0.859	44.44

Source: Refinitiv, QNBFS Research

Outlook

The QE Index lost around 51 points to close near the 10,650 mark on Sunday. The RSI line continues to stay above the 50 zone. Key support for the Index is now seen near 10,550, while resistance is expected around 10,900.

QE Index- Technical Charts

Daily



Source: Bloomberg, QNBFS Research

Weekly



Source: Bloomberg, QNBFS Research

Monthly



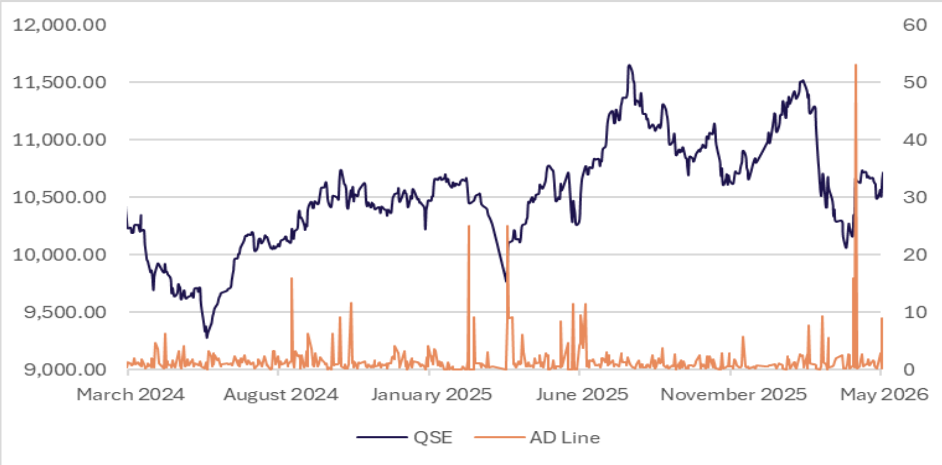
Source: Bloomberg, QNBFS Research

The QE Index failed to make any further headway towards 10,750 and slid lower on the back of profit-booking. However, the Index is still above its 50-DMA currently near 10,550, which is a positive sign. Meanwhile, the Index needs to cross 10,750 on a closing basis for a further rebound towards its 100-DMA currently near 10,840. However, any failure to cross above 10,750, can result in rangebound moves. On the downside, mid-bollinger band support near 10,640.

The QE Index bounced back after witnessing two consecutive weeks of decline. Moreover, the Index developed a bullish marubozu candle and stayed above its 100-WMA currently near 10,600, showing positive signs. However, the Index failed to close above its 200-WMA currently near 10,750. Acceptance above it is required for a further push towards its 50-WMA near 10,900. However, any failure to move above 10,750, can test the 10,600 level.

The QE Index managed to stay above its lower end of the channel trendline and closed above it, developing an inside day bullish candle, showing signs of a pause on downside. The Index also managed to protect its 200-MWA currently near 10,050, indicating positive signs. However, the Index needs to sustain above its 100-MWA currently near 10,550 to move higher towards its 50-MWA currently near 10,900. On the downside, any sustained weakness below its 200-MWA can drag it down to test 9,950.

Advance/Decline Line



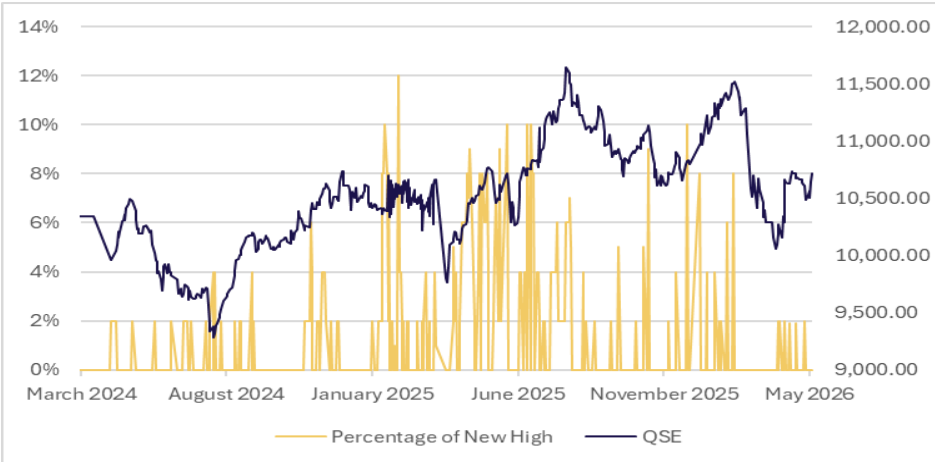
Source: Refinitiv, QNBFS Research

Percentage of Stocks Above 50-day Moving Average



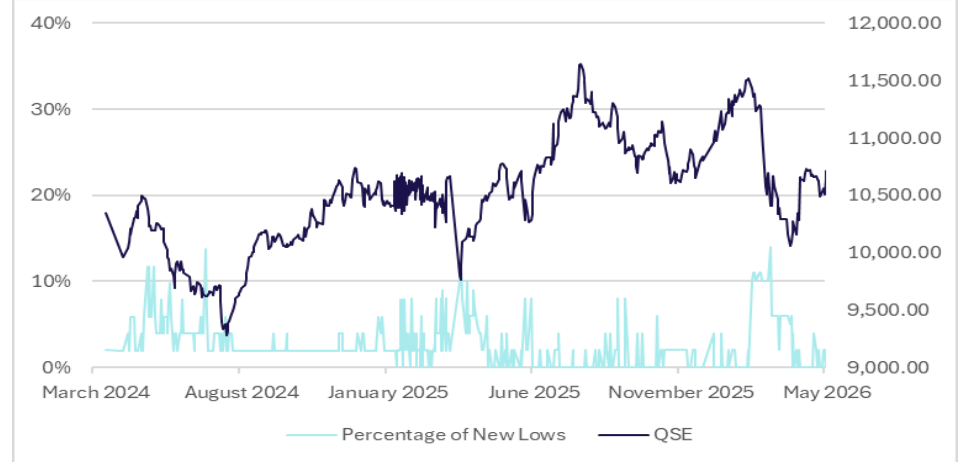
Source: Refinitiv, QNBFS Research

Percentage of New Highs to Total Market



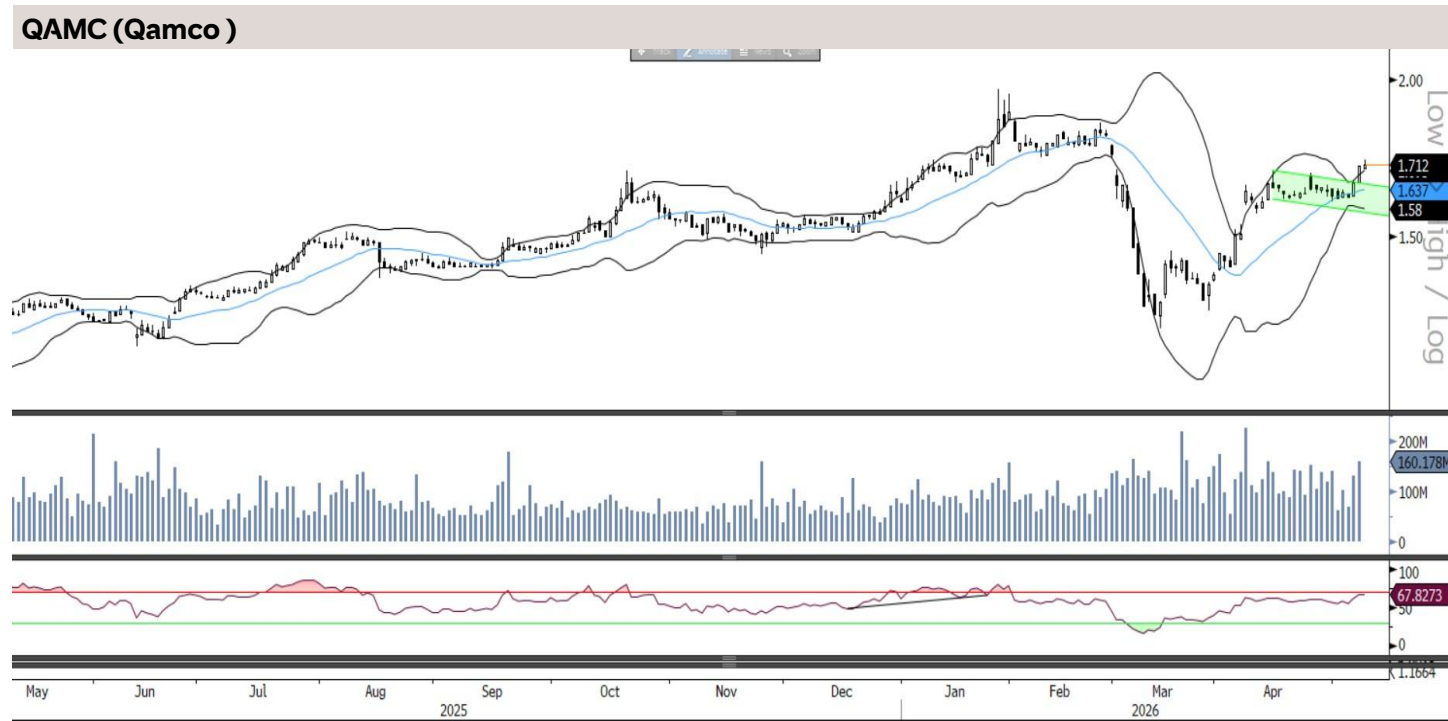
Source: Refinitiv, QNBFS Research

Percentage of New Lows to Total Market



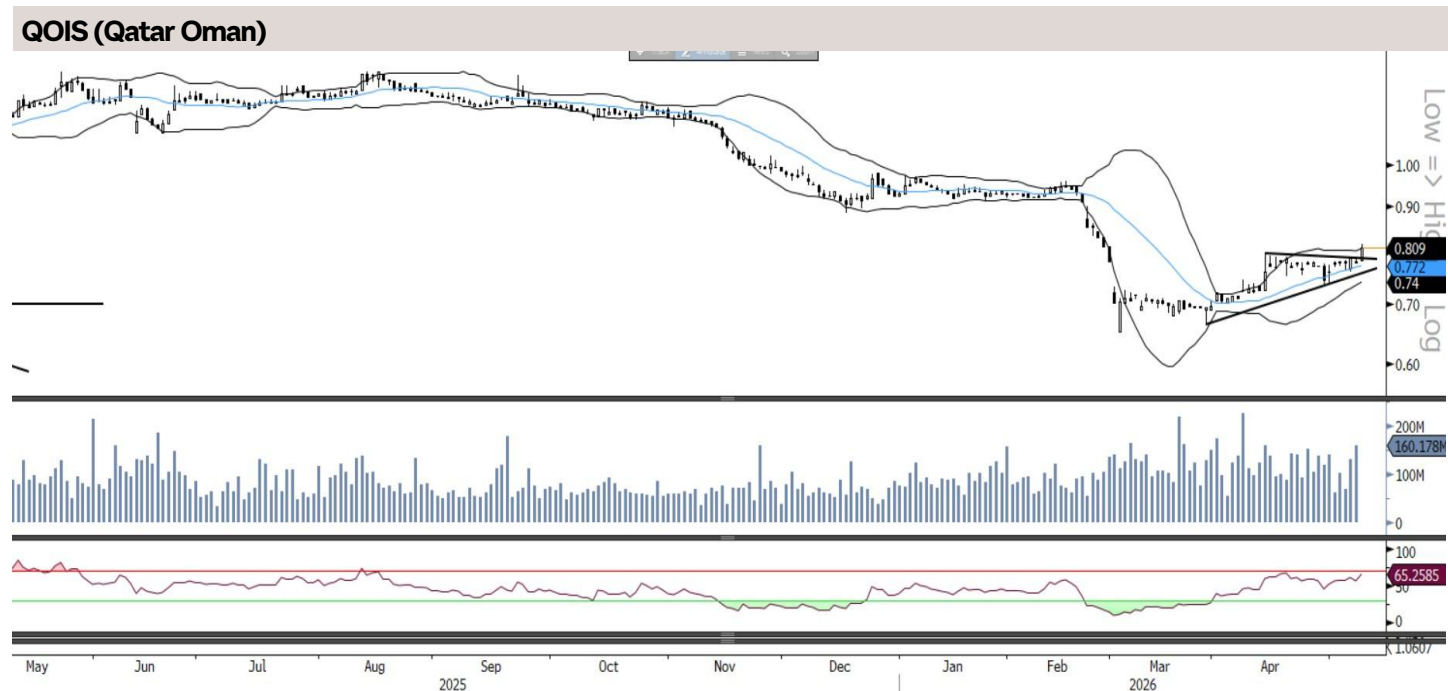
Source: Refinitiv, QNBFS Research

Daily Company Recommendations



QAMC after reaching its target trimmed its gains but it continues to stay above its upper end of the bollinger band, indicating the stock has enough strength to move higher. The RSI line is in the bullish zone. Traders can continue to hold their existing positions, for a revised target of QR1.732, with a new stop loss at QR1.698.

Source: Bloomberg, QNBFS Research



QOIS moved above its horizontal line of consolidation and closed above the upper end of the bollinger band with a bullish candle, showing signs of a potential upside. The RSI line is showing strength. Traders can initiate buy positions above QR0.811, for a target of QR0.818, with a stop loss at QR0.802.

Source: Bloomberg, QNBFS Research

Weekly Company Recommendations



On the weekly charts, the stock has been moving on the upside since the past few weeks and is staying above its mid-bollinger band and approaching towards its gap filling area which it had left earlier, indicating the stock is showing strength. Moreover, its trading above all the moving averages, indicating a likely higher move. The RSI line supports this bullish observation. Traders can consider buying the stock above QR1.718, with a stop loss of QR1.658 for a potential target of QR1.770.

Source: Bloomberg, QNBFS Research



On the monthly charts, QGRI has been stuck in the channel over the past few months, however, it managed to close above its 50-MWA along with its upper end of the bollinger band, showing signs of a possible breakout. Moreover, the stock witnessed increased volumes, which is a positive sign. The RSI line is also showing strength above the 50 zone. Investors could consider buying the stock above QR1.855 for a breakout confirmation, with a stop loss of QR1.672 for a potential target of QR1.965.

Source: Bloomberg, QNBFS Research

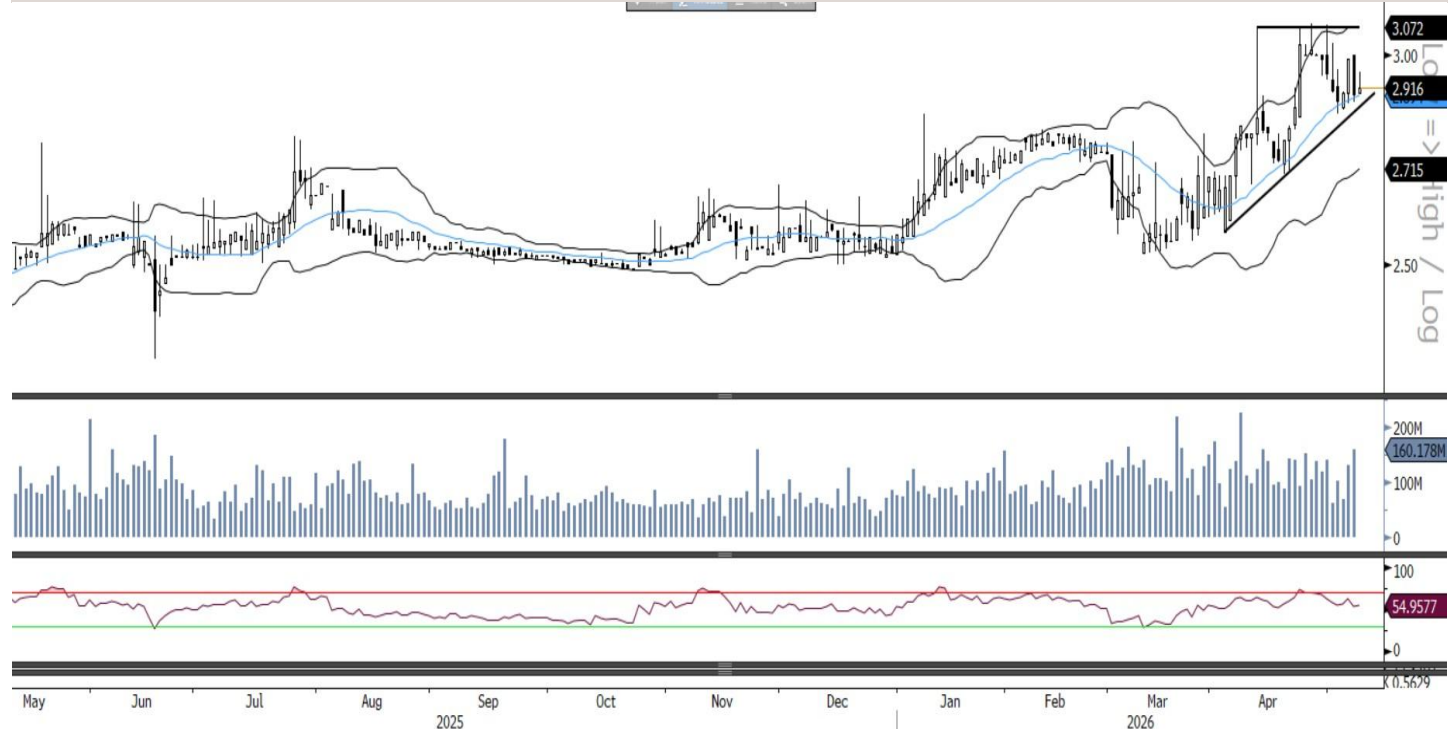
GISS (Gulf International) - Short Term



GISS breached its mid-bollinger band with large volumes and closed above it, after correction over the past few days, signaling a likely upside. The RSI line supports this bullish observation. Traders can initiate buy positions above QR2.177, for a target of QR2.190, with a stop loss at QR2.154.

Source: Bloomberg, QNBFS Research

DOHI (Doha Insurance Group)- Medium Term



DOHI after witnessing correction has managed to stay above its mid-bollinger band, indicating the stock can attempt a rebound in the coming sessions. The RSI line is in the buy zone. Traders can initiate buy above QR2.929, for a target of QR2.951, with a stop loss at QR2.897.

Source: Bloomberg, QNBFS Research

Contacts

QNB Financial Services Co. W.L.L.

Contact Center: (+974)4476 6666

info@qnbfs.com.qa

Doha, Qatar

Shahan Keushgerian

Senior Research Analyst

shahan.keushgerian@qnbfs.com.qa

Saugata Sarkar, CFA, CAIA

Head of Research

saugata.sarkar@qnbfs.com.qa

Phibion Makuwerere, CFA

Senior Research Analyst

phibion.makuwerere@qnbfs.com.qa

Dana Saif Al Sowaidi

Research Analyst

dana.alsowaidi@qnbfs.com.qa

Disclaimer and Copyright Notice: This publication has been prepared by QNB Financial Services Co. W.L.L. ("QNBFS") a wholly-owned subsidiary of Qatar National Bank (Q.P.S.C.). QNBFS is regulated by the Qatar Financial Markets Authority and the Qatar Exchange. Qatar National Bank (Q.P.S.C.) is regulated by the Qatar Central Bank. This publication expresses the views and opinions of QNBFS at a given time only. It is not an offer, promotion or recommendation to buy or sell securities or other investments, nor is it intended to constitute legal, tax, accounting, or financial advice. QNBFS accepts no liability whatsoever for any direct or indirect losses arising from use of this report. Any investment decision should depend on the individual circumstances of the investor and be based on specifically engaged investment advice. We therefore strongly advise potential investors to seek independent professional advice before making any investment decision. Although the information in this report has been obtained from sources that QNBFS believes to be reliable, we have not independently verified such information and it may not be accurate or complete. QNBFS does not make any representations or warranties as to the accuracy and completeness of the information it may contain, and declines any liability in that respect. For reports dealing with Technical Analysis, expressed opinions and/or recommendations may be different or contrary to the opinions/recommendations of QNBFS Fundamental Research as a result of depending solely on the historical technical data (price and volume). QNBFS reserves the right to amend the views and opinions expressed in this publication at any time. It may also express viewpoints or make investment decisions that differ significantly from, or even contradict, the views and opinions included in this report. This report may not be reproduced in whole or in part without permission from QNBFS.